

## Arl3

**Catalog Number:** 26070

**Gene Symbol:** ARL3

**Description:** Anti-Arl3 Mouse Monoclonal Antibody

**Background:** Arl3 (Arf-like 3) is an Arf family protein. Arl3 binds microtubules to alter specific aspects of cytokinesis. It has been proposed that retinitis pigmentosa 2 functions in concert with Arl3 to link the cell membrane and the cytoskeleton in photoreceptors as part of the cell signaling or vesicular transport machinery.

**Immunogen:** Recombinant Arl3 protein

**Tested applications:** ELISA, WB, IHC, IP

**Recommended dilutions:**

ELISA 1:100-1:5000

WB 1:100-1:2000

IHC 1:10-100

**Concentration:** 1 mg/ml

**Host:** Mouse

**Clonality:** Monoclonal

**Purity:** Purified from ascites

**Format:** Liquid

**Storage buffer:**

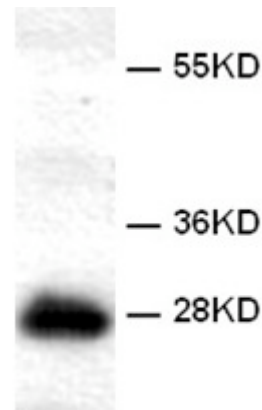
Preservative: no

Constituents: PBS (without  $Mg^{2+}$  and  $Ca^{2+}$ ), pH 7.4, 150 mM NaCl, 50% glycerol

**Species Reactivity:** Arl3 antibody recognizes Arl3 from vertebrates.

**Storage Conditions:** Store at  $-20^{\circ}C$ . Avoid freeze / thaw cycles

### Western blot:



### WB: Anti-Arl3 mAb

Western blot analysis of recombinant Arl3 proteins. Purified his-tagged Arl3 protein (Cat. #10152) was blotted with anti-Arl3 monoclonal antibody (Cat # 26070).